



STATE OF WASHINGTON
GAMBLING COMMISSION

"Protect the Public by Ensuring that Gambling is Legal and Honest"

June 14, 2023

Sent via email to rsantoriello@lnw.com

Renee Santoriello
Light and Wonder
6601 S. Bermuda Road
Las Vegas, NV 89119

RE: L&W GM Atlas Game Rule Update (multiple games) - Submission #3119

Dear Ms. Santoriello:

Light and Wonder amended multiple previously approved card games to include some of the following information:

- Added reference to the GM Atlas/Nexus Command II Progressive System.
- Added updated utility products.
- Updated name to Light and Wonder.

The amended games were as follows:

1	6-5-4 Poker	34	High Five Poker
2	6 Card Fortune Pai Gow	35	House Money – Dual Progressives
3	Bahama Bonus Blackjack	36	I Luv Suits Poker – Dual Progressives
4	Bet The Bust	37	King's Bounty
5	Bet The Set 21	38	King's Bounty – Dual Progressives
6	Bet The Set 21 Deluxe	39	Let It Ride, 3 Card Bonus – Cover All Bonus
7	Big Raise Hold'Em	40	Match Jack
8	Big Raise Stud Poker	41	Mississippi Stud – Cover All
9	Blackjack Switch	42	Pai Wow Bonus
10	Blazing 7's Progressive – Dealer's Up Card	43	Rabbit Hunter Stud Poker
11	Blazing 7's Progressive – Player Cards Only	44	Roll Your Own Blackjack
12	Caribbean Stud Poker	45	Royal Match 21 – Dual Progressives
13	Casino War	46	Royal Match 21 Deluxe
14	Cincinnati Seven Card Stud	47	Sharp Shooter – Tribal
15	Crazy 4 Poker - Coverall	48	Six Card Poker
16	Dakota Stud	49	Solitaire Stud

Ms. Santoriello

June 14, 2023

Page 2 of 3

17	DJ Wild Stud Poker - Coverall	50	Straight Edge Poker
18	Dragon Bonus	51	Super Fun 21
19	Dragon Bonus – Commission Free	52	Supreme 99
20	EZ Baccarat with Dragon Bonus	53	Texas Hold’Em Bonus
21	EZ Pai Gow	54	Three Card Baccarat
22	Face Up Pai Gow Poker – Dual Progressives	55	Three Card Draw Poker
23	Fast Action Hold’Em	56	Three Card Draw Poker, Pairs Plus
24	Field Gold 21	57	Three Card Poker
25	Flush Rush	58	Three Card Poker 6 Card Bonus – Face Up
26	Flushes Gone Wild	59	Three Card Poker Bonus – Face Up
27	Fortune 7 Baccarat	60	Three Card Poker Bonus - Tribal
28	Fortune Asia Poker	61	Three Card Poker Progressive – Cover All
29	Fortune Blackjack	62	TriLux Bonus – Dual Progressives
30	Fortune Pai Gow Poker Progressive	63	Triple Shot Rummy
31	Fortune San Lo Poker Progressive	64	Triple Shot Bonus
32	Four Card Poker	65	Ultimate Texas Hold’Em – Cover All
33	Free Bet Blackjack – Dual Progressives	66	Zappit Blackjack – Dual Progressives

We have reviewed the changes to the games noted above. Based on our review of the documentation we received from Light and Wonder, the Washington State Gambling Commission will approve the games under the conditions listed below:

- The games shall be played and operated under the terms and conditions set forth under the game rules you provided on May 5, 2023 and June 5, 2023 and are enclosed.

Commercial Card Rooms

- Commercial card room operators seeking to operate any of these games must first submit their internal controls and receive approval from the Commission prior to implementing.
- Manufacturers and distributors of graphic layouts and/or any other equipment associated with these games must be licensed by the state prior to the sale of the equipment.

Tribal Casinos

- Each Tribal Gaming Operation must request and obtain approval from their respective Tribal Gaming Agencies (TGA).
- Before TGA allows your games to operate, they will seek concurrence from our agency as well.

- In addition to your approved rules, the Tribal submission to us must include all supplemental information required by Tribal-State Compact Appendix A, Section 18.
- Manufacturers and distributors of graphic layouts and/or any other equipment associated with the game must be certified by the state and licensed by the Tribe prior to the sale of the equipment.

Any modifications to these games may affect this approval. If you have any questions on commercial implementation, please contact Jess Lohse at (206) 786-3530. If you have any questions on Tribal implementation, please contact Kelly Main at (206) 423-4260.

Thank you for your cooperation and willingness to comply with the gambling laws of Washington State.

Sincerely,

DocuSigned by:

8E8993B8572D46E...

Gary Drumheller
Assistant Director
Enforcement and Operations Division

cc: Jim Nicks, Special Agent in Charge, Regulation Unit
Dan Wegenast, Special Agent in Charge, Tribal Gaming Unit
Jess Lohse, Special Agent, Regulation Unit
Brian Lane, Special Agent, Regulation Unit
Kelly Main, Special Agent Supervisor, Tribal Gaming Unit
File



- Fortune Pai Gow Poker is a standard Pai Gow Poker game but with the optional Fortune Bonus, Pai Gow'd and jackpot wagers. The Commission Free Fortune Pai Gow version is a standard Pai Gow Poker game but includes the Fortune and Tiger 9 bonus wagers. All rules pertaining to standard Pai Gow Poker and approved Pai Gow Poker variation games as posted on the WSGC's website remain the same and are not altered in this game.
- Operators cannot allow wagering limits to exceed the authorized limits set out in WAC 230-15-040 and WAC 230-15-140.
- If the below game is to be hand dealt using a dealing shoe, dealers will shuffle according to house procedures. The dealer then follows the house dealing procedures. The dealer must comply with WAC 230-15-465. If any automatic shuffle machine is used in conjunction with this game, it must be a WSGC approved model, manufactured by a WSGC licensed manufacturer.
- An optional LNW Gaming, Inc LCD Display that can be used on this game utilizes i-Verify v1.0.017 (or higher), i-Deal v3.8.024 (or higher) or i-Deal Plus NXP v1.0.114 or higher.
- If the licensee utilizes the optional i-Verify equipment for this game they will need to follow the Washington State requirements listed below:
 - I. Licensee must ensure all other players at the table have set their hands before using the i-Verify Display to set a player's hand to the Casinos "house way".
 - II. Dealers must not access the i-Verify Display to reveal the dealer "house way" until all players at the table have set their hands or had their hand set according to the Casinos "house way".
 - III. Licenses and Tribal Casinos must ensure the i-Verify Display can be viewed by surveillance as required in WAC 230-15-280 and Tribal-State Compacts.

Fortune Pai Gow Poker Rules of Play

1. Fortune Pai Gow Poker is an optional bonus bet on the casino game Pai Gow poker. The game is played with a 53-card deck, consisting of a standard 52 card deck and one joker. The joker may either complete a straight, flush, straight flush or act as an ace.
2. The Fortune Bonus bet considers the best hand possible among the player's seven cards and is reconciled against an approved posted payable. See payable for odds.

3. Players may bet any amount within table limits; however, a Fortune Bonus bet of at least \$5 qualifies them for **Envy Bonus** payouts. Players win the **Envy Bonus** when a player at the table receives a four of a kind or higher, excluding the dealer and his/her own hand.
4. To begin each round, players must make their standard Pai Gow wagers and, the optional, Fortune Bonus wager. If a player wagers at least \$5 on the Fortune Bonus, the dealer must place an “Envy” lammer next to it.
5. The dealer then follows house procedures for Pai Gow poker.
6. While reconciling the standard Pai Gow poker wagers, the dealer also reconciles Fortune Bonus bets.
 - a. If the player’s hand qualifies for payouts, the dealer pays the player according to the posted payable.
 - i. Notwithstanding to the payout odds on the approved payable options and subject to gaming regulations, a casino licensee may establish a maximum aggregate amount that is payable per round or per hand. It remains the casino licensee’s sole responsibility to post a sign at the table explaining the details and the ramifications of the aggregate win limit. The **Envy Bonus** payout is not an odds-based payout and therefore it is not subject to an aggregate limit.
 - ii. The dealer leaves the “Envy” lammer, if applicable, next to the player’s original wager and payouts. The dealer will not pick up the envy lammer(s) until all wagers have been reconciled.
 - b. If the player’s hand does not qualify for payouts, the dealer takes the player’s Fortune Bonus wager.
 - i. The dealer leaves the “Envy” lammer, if applicable, next to the player’s original wager and payouts. The dealer will not pick up the envy lammer(s) until all wagers have been reconciled.
7. The dealer pays all **Envy Bonuses** at the end of the round. If at least one player has a four of a kind or higher, all players with envy lammers win—see payable**. In the event more than one player has at least four of a kind, then all players with envy lammers win multiple payouts.
 - a. A player cannot win the **Envy Bonus** for his/her own—or the dealer’s—hand.

Optional Bonus Bets

Fortune Pai Gow Poker with Pai Gow’d option

Pai Gow’d is an optional bonus wager for Pai Gow Poker. Players win the Pai Gow’d bonus wager if the dealer’s seven-card hand contains less than a pair, and the player’s five card hand beats the dealer’s five card hand. The worse the dealer’s hand is, the more the bet pays.

Dealing Procedures:

1. Players make the optional Pai Gow’d wager before the start of a hand. Players may bet within the posted minimums and maximums for this wager.
2. The dealer reconciles the Pai Gow’d wager as they settle each player’s Pai Gow and Fortune Bonus wagers.
3. If the dealer’s seven-card hand contains less than a pair, and the player’s five-card hand beats the dealer’s five-card hand, the Pai Gow’d wager wins. See payable for odds. If the dealer’s seven-card hand contains a pair or better, the Pai Gow’d bet loses.

Commission Free Fortune Pai Gow Poker

Commission Free Fortune Pai Gow Poker features head-to-head play against the dealer with two optional bonus bets. The game uses a total of 53 cards, the standard 52 cards plus 1 Joker. The Joker can be used as an Ace or to complete a straight, a flush, or straight flush.

Winning bets do not pay 5% commission.

- *Note: In the event the casino offers the player/banker option, the same Rules of Play apply according to approved internal controls, including the player/banker 9-high (Low Hand) push hand. The player/banker must set hand according to house ways. All bonus wagers and Envy payouts remain the responsibility of the house.*

All players push when the dealer plays 9-high in his two-card hand (Low).

The game features two optional bonus bets:

- **Fortune Bonus Wager:** Wins if the player's best possible five-card hand is three of a kind or higher. Players may bet any amount within table limits; however, a *Fortune Bonus* wager of at least \$5 qualifies them for **Envy Bonus** payouts. Players win the **Envy Bonus** when a player at the table receives a four of a kind or higher, excluding the dealer and his/her own hand.
- **Tiger 9 Wager:** Wins if the dealer plays 9-high in his two-card hand and the player's two-card hand beats the dealer's two-card hand.

Commission Free Fortune Pai Gow Poker Rules of Play

- 1) To begin each round, players must make their standard Pai Gow wager. Player's may also place the optional *Fortune Bonus* and *Tiger 9* wagers. If a player wagers at least \$5 on the *Fortune Bonus*, the dealer must place an "Envy" lammer next to it.
- 2) The dealer then follows house procedures for dealing Pai Gow Poker. While reconciling the standard Pai Gow Poker wagers, the dealer also reconciles *Fortune Bonus* and *Tiger 9* bonus bets.
- 3) If the player's hand qualifies for payouts, the dealer pays the player according to the posted paytables.
 - a. If a casino implements aggregate limits, it remains the casino's sole responsibility to post a sign at the table explaining the details and the ramifications of the aggregate win limit. The **Envy Bonus** payout is not an odds-based payout and therefore it is not subject to an aggregate limit.
- 4) If the player's hand does not qualify for payouts, the dealer takes the player's *Fortune Bonus* wager.
- 5) The dealer leaves the "Envy" lammer, if applicable, next to the player's original wager and payouts. The dealer will not pick up the envy lammer(s) until all wagers have been reconciled.
- 6) The dealer then pays all **Envy Bonuses** at the end of the round. If at least one player has a four of a kind or higher, all players with envy lammers win—see payable. In the event more than one player has at least four of a kind, then all players with envy lammers win multiple payouts.

Note: A player cannot win the **Envy Bonus** for his/her own—or the dealer's—hand.



Paytables

Paytable 1	Pays	Envy
7 Card Straight Flush	5,000 to 1	\$ 1,000
Royal Flush + Royal Match*	1,000 to 1	\$ 250
7 Card Straight Flush with Joker	750 to 1	\$ 100
5 Aces	250 to 1	\$ 50
Royal Flush	100 to 1	\$ 25
Straight Flush	50 to 1	\$ 10
4 of a Kind	20 to 1	\$ 5
Full House	5 to 1	
Flush	4 to 1	
3 of a Kind	3 to 1	
Straight	2 to 1	
Three Pair	Push	
House Edge (max Envy Bonus)	5.30%	
House Edge (no Envy Bonus)	8.00%	

Paytable 2	Pays	Envy
7 Card Straight Flush	8,000 to 1	\$ 5,000
Royal Flush + Royal Match*	2,000 to 1	\$ 1,000
7 Card Straight Flush with Joker	1,000 to 1	\$ 500
5 Aces	400 to 1	\$ 250
Royal Flush	150 to 1	\$ 50
Straight Flush	50 to 1	\$ 20
4 of a Kind	25 to 1	\$ 5
Full House	5 to 1	
Flush	4 to 1	
3 of a Kind	3 to 1	
Straight	2 to 1	
House Edge (max Envy Bonus)	3.13%	
House Edge (no Envy Bonus)	7.76%	

Paytable 3	Pays	Envy
7 Card Straight Flush	5,000 to 1	\$ 3,000
Royal Flush + Royal Match	2,000 to 1	\$ 1,000
7 Card Straight Flush with Joker	1,000 to 1	\$ 500
5 Aces	400 to 1	\$ 250
Royal Flush	150 to 1	\$ 50
Straight Flush	50 to 1	\$ 20
4 of a Kind	25 to 1	\$ 5
Full House	5 to 1	
Flush	4 to 1	
3 of a Kind	3 to 1	
Straight	2 to 1	
House Edge (max Envy Bonus)	3.23%	
House Edge (no Envy Bonus)	7.82%	

Paytable 4	Pays	Envy
7 Card Straight Flush	2,500 to 1	\$ 1,000
Royal Flush + Royal Match	1,000 to 1	\$ 750
7 Card Straight Flush with Joker	750 to 1	\$ 250
5 Aces	250 to 1	\$ 100
Royal Flush	125 to 1	\$ 50
Straight Flush	50 to 1	\$ 20
4 of a Kind	25 to 1	\$ 5
Full House	5 to 1	
Flush	4 to 1	
3 of a Kind	3 to 1	
Straight	2 to 1	
House Edge (max Envy Bonus)	4.09%	
House Edge (no Envy Bonus)	8.49%	

Paytable 6	Pays	Envy
7 Card Straight Flush	5,000 to 1	\$ 2,500
Royal Flush + Royal Match	1,000 to 1	\$ 500
7 Card Straight Flush with Joker	500 to 1	\$ 250
5 Aces	300 to 1	\$ 150
Royal Flush	110 to 1	\$ 55
Straight Flush	45 to 1	\$ 25
4 of a Kind	25 to 1	\$ 6
Full House	5 to 1	
Flush	4 to 1	
3 of a Kind	3 to 1	
Straight	2 to 1	
House Edge (max Envy Bonus)	3.94%	
House Edge (no Envy Bonus)	9.28%	

Paytable 7	Pays	Envy
7 Card Straight Flush	5,000 to 1	\$ 2,500
Royal Flush + Royal Match	2,000 to 1	\$ 500
7 Card Straight Flush with Joker	1,000 to 1	\$ 250
5 Aces	400 to 1	\$ 150
Royal Flush	150 to 1	\$ 55
Straight Flush	50 to 1	\$ 25
4 of a Kind	25 to 1	\$ 6
Full House	5 to 1	
Flush	4 to 1	
3 of a Kind	3 to 1	
Straight	2 to 1	
House Edge (max Envy Bonus)	2.49%	
House Edge (no Envy Bonus)	7.82%	



ShuffleMaster

©2005 Shuffle Master, Inc.
Made in USA

www.shufflemaster.com



www.shufflemaster.com



www.shufflemaster.com



www.shufflemaster.com



www.shufflemaster.com

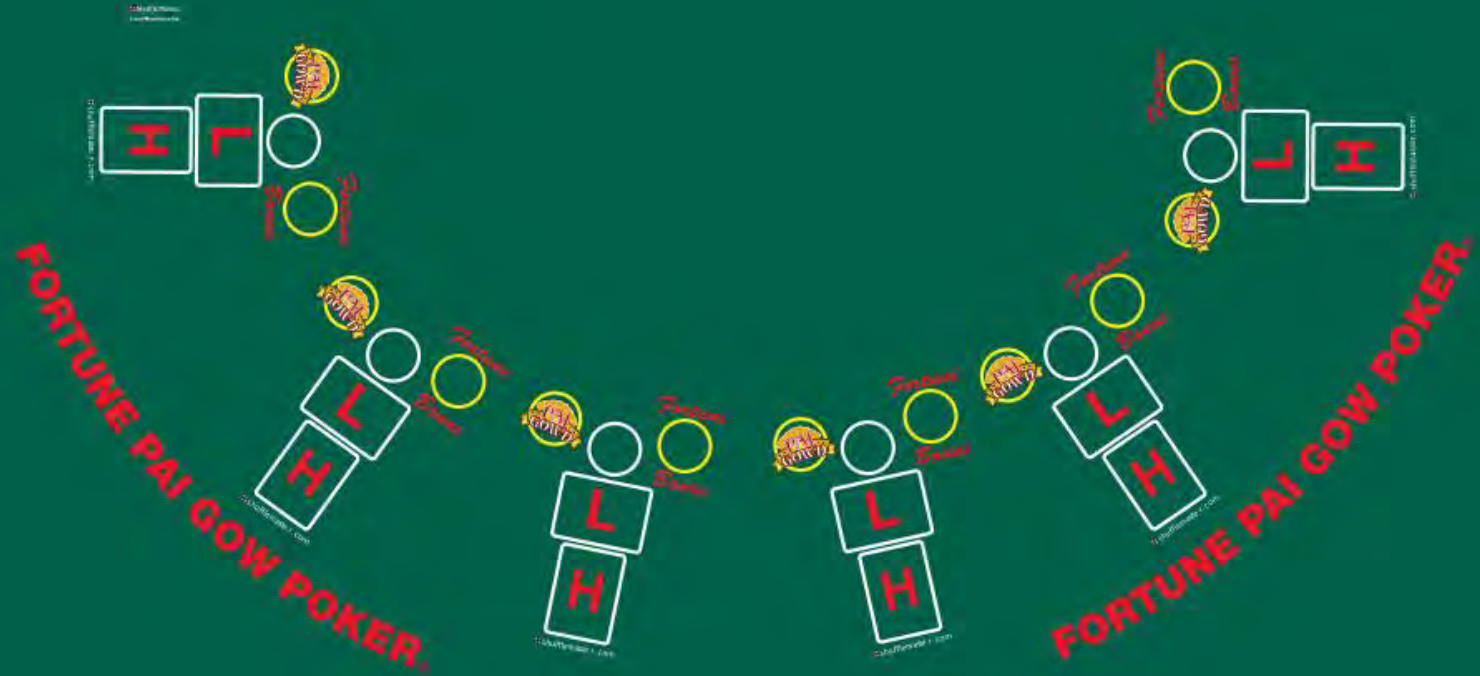


www.shufflemaster.com

Pai Gow'd Paytables

Dealer Hand	01 Pays	02 Pays	03 Pays
Nine-high	100 to 1	100 to 1	100 to 1
Ten-high	40 to 1	50 to 1	40 to 1
Jack-high	10 to 1	10 to 1	10 to 1
Queen-high	7 to 1	7 to 1	7 to 1
King-high	6 to 1	5 to 1	5 to 1
Ace-high	3 to 1	3 to 1	3 to 1
House edge:	9.80%	12.14%	13.75%
Hit frequency:	14.78%	14.78%	14.78%

*Player's 5 card hand must beat the dealer's 5 card hand.





Paytables

Paytable 1	Pays	Envy
7 Card Straight Flush	5,000 to 1	\$ 1,000
Royal Flush + Royal Match*	1,000 to 1	\$ 250
7 Card Straight Flush with Joker	750 to 1	\$ 100
5 Aces	250 to 1	\$ 50
Royal Flush	100 to 1	\$ 25
Straight Flush	50 to 1	\$ 10
4 of a Kind	20 to 1	\$ 5
Full House	5 to 1	
Flush	4 to 1	
3 of a Kind	3 to 1	
Straight	2 to 1	
Three Pair	Push	
House Edge (max Envy Bonus)	5.30%	
House Edge (no Envy Bonus)	8.00%	

Paytable 2	Pays	Envy
7 Card Straight Flush	8,000 to 1	\$ 5,000
Royal Flush + Royal Match*	2,000 to 1	\$ 1,000
7 Card Straight Flush with Joker	1,000 to 1	\$ 500
5 Aces	400 to 1	\$ 250
Royal Flush	150 to 1	\$ 50
Straight Flush	50 to 1	\$ 20
4 of a Kind	25 to 1	\$ 5
Full House	5 to 1	
Flush	4 to 1	
3 of a Kind	3 to 1	
Straight	2 to 1	
House Edge (max Envy Bonus)	3.13%	
House Edge (no Envy Bonus)	7.76%	

Paytable 3	Pays	Envy
7 Card Straight Flush	5,000 to 1	\$ 3,000
Royal Flush + Royal Match	2,000 to 1	\$ 1,000
7 Card Straight Flush with Joker	1,000 to 1	\$ 500
5 Aces	400 to 1	\$ 250
Royal Flush	150 to 1	\$ 50
Straight Flush	50 to 1	\$ 20
4 of a Kind	25 to 1	\$ 5
Full House	5 to 1	
Flush	4 to 1	
3 of a Kind	3 to 1	
Straight	2 to 1	
House Edge (max Envy Bonus)	3.23%	
House Edge (no Envy Bonus)	7.82%	

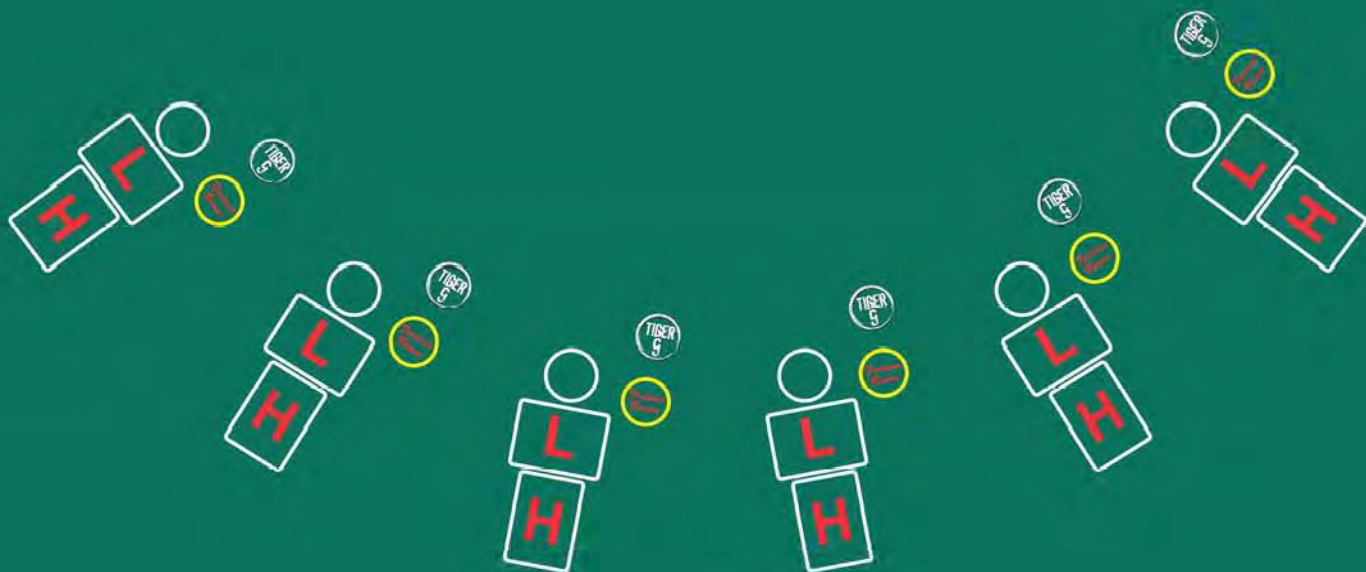
Paytable 4	Pays	Envy
7 Card Straight Flush	2,500 to 1	\$ 1,000
Royal Flush + Royal Match	1,000 to 1	\$ 750
7 Card Straight Flush with Joker	750 to 1	\$ 250
5 Aces	250 to 1	\$ 100
Royal Flush	125 to 1	\$ 50
Straight Flush	50 to 1	\$ 20
4 of a Kind	25 to 1	\$ 5
Full House	5 to 1	
Flush	4 to 1	
3 of a Kind	3 to 1	
Straight	2 to 1	
House Edge (max Envy Bonus)	4.09%	
House Edge (no Envy Bonus)	8.49%	

Paytable 6	Pays	Envy
7 Card Straight Flush	5,000 to 1	\$ 2,500
Royal Flush + Royal Match	1,000 to 1	\$ 500
7 Card Straight Flush with Joker	500 to 1	\$ 250
5 Aces	300 to 1	\$ 150
Royal Flush	110 to 1	\$ 55
Straight Flush	45 to 1	\$ 25
4 of a Kind	25 to 1	\$ 6
Full House	5 to 1	
Flush	4 to 1	
3 of a Kind	3 to 1	
Straight	2 to 1	
House Edge (max Envy Bonus)	3.94%	
House Edge (no Envy Bonus)	9.28%	

Paytable 7	Pays	Envy
7 Card Straight Flush	5,000 to 1	\$ 2,500
Royal Flush + Royal Match	2,000 to 1	\$ 500
7 Card Straight Flush with Joker	1,000 to 1	\$ 250
5 Aces	400 to 1	\$ 150
Royal Flush	150 to 1	\$ 55
Straight Flush	50 to 1	\$ 25
4 of a Kind	25 to 1	\$ 6
Full House	5 to 1	
Flush	4 to 1	
3 of a Kind	3 to 1	
Straight	2 to 1	
House Edge (max Envy Bonus)	2.49%	
House Edge (no Envy Bonus)	7.82%	

Tiger 9

Hand	Pays*
Tiger 9	30 to 1
House Edge	21.1%



NEXUS COMMAND/GM ATLAS

Fortune Pai Gow Poker Jackpot Rules of Play:

1. Fortune Pai Gow Poker offers an optional jackpot wager.
2. The bet considers the best hand possible among all the seven player's cards.
3. Paytables are listed separately.

Note: The joker is used as an Ace in the 5 Aces hand, or as any card to complete a straight flush, straight or flush.

4. The meters will be reseeded when the 100% award hits. The cost of the reseed has been factored into the casino's mathematical advantage.
5. To begin each round, players must make their regular game's wager. They may also place any bonus or jackpot wager. Players must place the jackpot wagers on the sensor in front of their betting position. The sensor will light up.
6. Once all players place their bets, the dealer will press "START GAME" on the keypad. The sensors will then light up, indicating a jackpot wager. The dealer will then remove all jackpot bets from the table.
7. The dealer then follows house procedures for dealing the regular game.
8. The dealer reconciles the standard wagers, bonus wagers, and jackpot wagers at the same time. Follow the procedure in the next section for reconciling percentage pays from the jackpot meter.
9. Jackpot winners:
 - a. The percentage pays are paid from the jackpot shown on the jackpot meter.
 - b. Other hands are paid from the tray; they do not come off the meter.
 - c. In the event more than one jackpot meter pay hits during the same round, the dealer will first pay the player farthest on the right and then move counter-clockwise to pay other players. As regulatory procedures permit, this policy can be replaced by casino internal controls.
 - d. When a player has a jackpot winner, the dealer will select the player spot corresponding to the player with the winning jackpot hand. The dealer will then press the appropriate hand button on the display. (If the hand button is pressed by accident, pressing it again will turn it off.)
 - e. The dealer will then press the "Hit Jackpot" button.
 - f. The dealer shall then contact a supervisor.
 - g. Once the casino verifies the jackpot win, the supervisor will press the "Pay Jackpot" button. To complete the action, a Supervisor or Executive card (depending on jackpot level) swipe is required. This records the win onto the Game Manager computer and adjusts the meter appropriately for the prize won. House procedures are then followed for paying the prize. (Reviewing the monitor connected to the Game Manager will show the prize amount to be paid, and a win page may be printed, which can be used to help record the payout for accounting.)
 - h. Once the dealer has reconciled all action, they press "END GAME." This resets the system to begin the next hand.
 - i. Once the Supervisor or Executive card (depending on jackpot level) is swiped the prize is logged into Game Manager. If the jackpot pay needs to be backed out at this point, the award will need to be manually backed out using the Game Manager manual adjustment feature.

Fortune Pai Gow Poker Blackjack Jackpot

- Nexus Command Game Manager 2 v2.5.4 or higher, GM Atlas v5.4.0/Nexus Command II v5.4 or higher, Nexus Command Table Controller 2 v2.6.0 or higher and a jackpot display. The jackpot display can either be provided by LNW Gaming, Inc or the operator.
- The jackpot display should be a table mounted monitor with no additional intelligence or functionality, including but not limited to network capability (wired or wireless). This non-intelligent monitor can either be provided by LNW Gaming, Inc or the operator so long as it does not introduce any additional functionality.
- An optional LNW Gaming, Inc LCD Display that can be used on this game utilizes i-Verify v1.0.017 (or higher), i-Deal v3.8.024 (or higher) or i-Deal Plus NXP v1.0.114 or higher.
- If the licensee utilizes the optional i-Verify equipment for this game they will need to follow the Washington State requirements listed below:
 - I.* Licensee must ensure all other players at the table have set their hands before using the i-Verify Display to set a player's hand to the Casinos "house way".
 - II.* Dealers must not access the i-Verify Display to reveal the dealer "house way" until all players at the table have set their hands or had their handset according to the Casinos "house way".
 - III.* Licenses and Tribal Casinos must ensure the i-Verify Display can be viewed by surveillance as required in WAC 230-15-280 and Tribal-State Compacts.

House Jackpot and Progressive Jackpots

- Operators may choose to offer up to two jackpot game options on a layout using two independent wagering sensors and displaying two independent jackpot amounts.
- Each jackpot sensor is considered a separate game.
- Progressive Jackpots cannot be linked with House Jackpots.
- All jackpots on a table must be of a single jackpot type (House Jackpot or Jackpot).
- Operators can only offer one jackpot game option per sensor.
- When operated as a house jackpot, the jackpot amount is at the discretion of the casino. Prizes are set by the casino and are required to be displayed at each gaming table. Prizes displayed are considered property of the casino until won by one or more players. The casino must post all required notices and disclosures at each table and follow all rules for house jackpots in WAC 230-15-671.
- When operated as a progressive jackpot, rules for progressive jackpot prizes are contained within WAC 230-15-680 through WAC 230-15-720.

Fortune Pai Gow Poker Jackpot Paytable
(Paytables to be used on Fortune Pai Gow Poker Jackpot Tables Only)

Hand	FPGPP-WA01*
7 Card Natural Straight Flush	100%
Royal Flush + Royal Match*	50%
7 Card Wild Straight Flush with Joker	25%
5 Aces	2,500 for 1
Royal Flush	200 for 1
Straight Flush	100 for 1
Four of a Kind	75 for 1
Full House	6 for 1
*Original Wager is NOT Returned	
**Royal Match is a Suited King Queen	

Hand	FPGPP-WA07*
5 Aces	100%
Royal Flush	500 for 1
Straight Flush	100 for 1
Four of a Kind	75 for 1
Full House	5 for 1
*Original Wager is NOT Returned	

Hand	FPGPP-WA03*
7 Card Straight Flush	100%
5 Aces	10%
Royal Flush	500 for 1
Straight Flush	100 for 1
Four of a Kind	75 for 1
Full House	4 for 1
*Original Wager is NOT Returned	

Hand	FPGPP-ML2*
7 Card Straight Flush	100% Mega
5 Aces	100% Major
Royal Flush	100% Minor
Straight Flush	100 for 1
Four of a Kind	75 for 1
Full House	4 for 1
*Original Wager is NOT Returned	

All settings and pays, listed in the above pay tables, are based off a fixed \$1 wager. Card room operators may select a different fixed wager amount. If the Jackpot is configured with a different fixed wager amount, pays are multiplied accordingly and displayed on the meter.

Linked Paytables for Face Up Pai Gow Poker Jackpot and Fortune Pai Gow Poker Jackpot

Paytables

Hand	FUPGPP-WA01 FPGPP-WA01 *
7 Card Natural Straight Flush	100%
Royal Flush + Royal Match**	50%
7 Card Wild Straight Flush with Joker	25%
5 Aces	2,500 for 1
Royal Flush	200 for 1
Straight Flush	100 for 1
4 of a Kind	75 for 1
Full House	6 for 1
*Original Wager is NOT Returned	
**Royal Match is a Suited King Queen	

Hand	FUPGPP-07/ FPGPP-WA07*
5 Aces	100%
Royal Flush	500 for 1
Straight Flush	100 for 1
Four of a Kind	75 for 1
Full House	5 for 1
*Original Wager is NOT Returned	

Hand	FUPGPP-03/ FPGPP-WA03*
7 Card Straight Flush	100%
5 Aces	10%
Royal Flush	500 for 1
Straight Flush	100 for 1
Four of a Kind	75 for 1
Full House	4 for 1
*Original Wager is NOT Returned	

Hand	FUPGPP-ML02/ FPGPP-ML2*
7 Card Straight Flush	100% Mega
5 Aces	100% Major
Royal Flush	100% Minor
Straight Flush	100 for 1
Four of a Kind	75 for 1
Full House	4 for 1
*Original Wager is NOT Returned	

All settings and pays, listed in the above pay tables, are based off a fixed \$1 wager. Card room operators may select a different fixed wager amount. If the Jackpot is configured with a different fixed wager amount, pays are multiplied accordingly and displayed on the meter.



PROGRESSIVE SYSTEMS FLEXIBILITY and RECOMMENDATIONS:

- Progressive meter contribution
 - When using a pay table in which all payouts are deducted from the meter, we recommend utilizing the system to configure meter contribution rates anywhere between 0-100%.
 - Most pay tables with this style of math are designed to grow over time when a contribution rate of 70% or more is used. If less is contributed, the risk of the meter “running dry” increases.
 - When using a pay table in which only the progressive (percentage) pays are deducted from the meter, we recommend only reducing the pre-configured meter contribution rate if any changes are made. Adjusting the contribution rate above the pre-configured value would reduce the mathematical house advantage of the wager.
- Reserve contribution
 - We recommend contributing a small portion of each progressive wager to the reserve. This amount will be added on to any configured seed amount after a 100% award is given, and will help reduce the drop in play expected after a jackpot hits.
 - We do not recommend eliminating a seed amount entirely and using the reserve as the only seed mechanism. All games present a certain likelihood of back-to-back awards, and this method runs the risk of restarting the meter at a very low amount in that case.
- Seed amount
 - We recommend using the pre-configured seed amount in the system. This amount is specific to the pay table selected for use, and is designed to offer a reasonable starting point that works with the pay table’s math.
 - If any changes are made, we recommend the seed amount to be at least as large as the largest “fixed” award on the pay table.
 - We do not recommend configuring a \$0 seed amount.

©2007 Shuffle Master, Inc.
Modified 2008

