



STATE OF WASHINGTON
GAMBLING COMMISSION

PO Box 42400 Olympia WA 98504-2400 (360) 486-3440 TDD (360) 486-3637 FAX (360) 486-3626

July 23, 2019

Dave Wisler
Masque Publishing Inc.
8400 Park Meadows Dr.
Lone Tree, CO 80124

RE: Down Under Blackjack

Dear Mr. Wisler,

We have reviewed the changes made to "Down Under Blackjack." Based on our review of the documentation we received from Masque Publishing Inc., the Washington State Gambling Commission will approve the game under the conditions listed below:

- The game shall be played and operated under the terms and conditions set forth under the "Down Under Blackjack" game rules you provided on May 1, 2019 and are enclosed.

Commercial Card Rooms

- Commercial card room operators seeking to operate this game must first submit their internal controls and receive approval from the Commission prior to implementing.
- Manufacturers and distributors of graphic layouts and/or any other equipment associated with the game must be licensed by the state prior to the sale of the equipment.

Tribal Casinos

- Each Tribal Gaming Operation must request and obtain approval from their respective Tribal Gaming Agencies (TGA).
- Before TGA allows your game to operate, they will seek concurrence from our agency as well.
- In addition to your approved rules, the Tribal submission to us must include all supplemental information required by Tribal-State Compact Appendix A, Section 18.

Mr. Wisler
July 23, 2019
Page 2 of 2

- Manufacturers and distributors of graphic layouts and/or any other equipment associated with the game must be certified by the state and licensed by the Tribe prior to the sale of the equipment.

Any modifications to this game may affect this approval. If you have any questions on commercial implementation, please contact Jess Lohse at (206) 786-3530. If you have any questions on Tribal implementation, please contact Kelly Main at (206) 423-4260.

Thank you for your cooperation and willingness to comply with the gambling laws of Washington State.

Sincerely,



Tina Griffin
Assistant Director
Licensing, Regulation and Enforcement Division

Enclosure

cc: Jim Nicks, Special Agent in Charge, Regulation Unit
Cathy Harvey, Special Agent in Charge, Tribal Gaming Unit
Jess Lohse, Special Agent, Regulation Unit
Brian Lane, Special Agent, Regulation Unit
Kelly Main, Special Agent Supervisor, Tribal Gaming Unit
File



RULES OF PLAY

ROP02222017WA

RULES OF PLAY

Down Under is a standard blackjack game with an optional bonus wager. All rules pertaining to blackjack as posted on the WSGC website will remain the same except as notes in these rules of play.

The Match The Dealer Progressive is an optional Progressive wager in which one common progressive jackpot can be used with Match The Dealer Blackjack and Down Under Blackjack. When linking Match The Dealer Blackjack and Down Under Blackjack to a common progressive, the same pay tables must be used between all linked games. When using the Match The Dealer Progressive on Down Under Blackjack, these game rules must be played with the Match The Dealer Progressive v003 or higher as approved by the WSGC.

1. Down Under Blackjack is a variant of blackjack. Down Under Blackjack is played in the same manner as regular blackjack; players can hit, split and double down. In Down Under Blackjack all winning bets pay 1:1 with the exception of blackjack which pays either 3:2 or 6:5.
2. As in regular blackjack, in Down Under Blackjack the goal of the player is to make a hand that totals 21, or that is higher than the final total of the dealer's hand without exceeding 21.
3. Down Under Blackjack is played with either regular cards and a Masque Card Reader, or specially-modified Down Under Cards and a dealer peeker device (such as a TechArt MaxTime peeker). There are three distinct groups: Small (blue), Medium (red) & Large (Gold). When the dealer's hand is placed in the Masque Card Reader the appropriate colored light will illuminate to indicate to the players the range of possible values for the dealer's hole card. Likewise, Down Under cards give the player the ability to see a range of possible values for the dealer's hole card when used with a peeker. The backs of the cards remain unchanged as do the suits and card ranks.

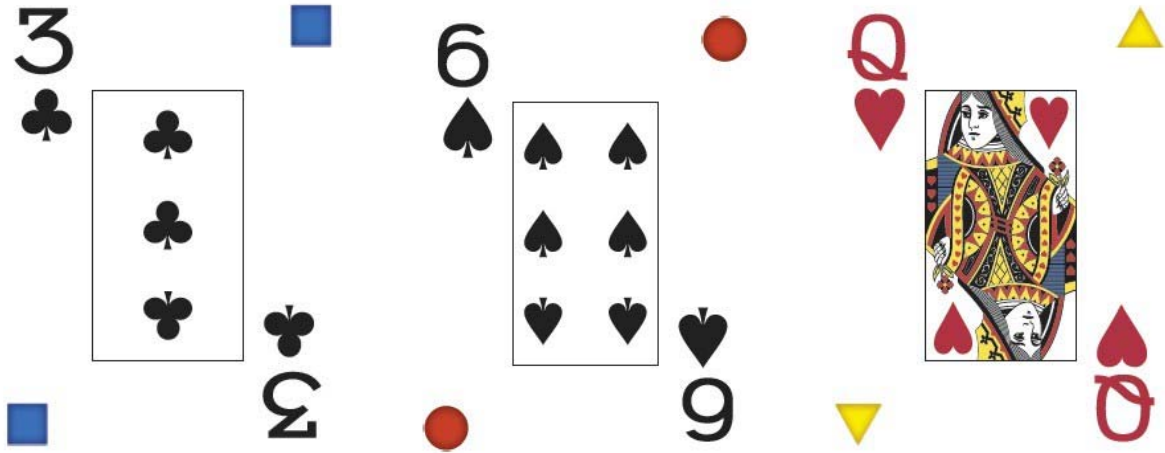


Fig. 1. Down Under Cards.

Before the action begins, the dealer will check the range of the hole card. (Fig. 3.) The corresponding boxes allow the dealer to mark the range of the dealer's hole card on each hand. (Fig. 4.)



Fig 2. A Peeker or a Masque Card Reader, and the card ranges are part of the felt and sit in front of the dealer.

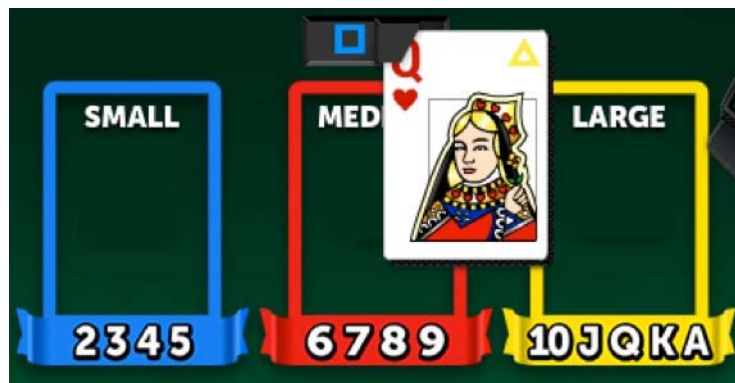


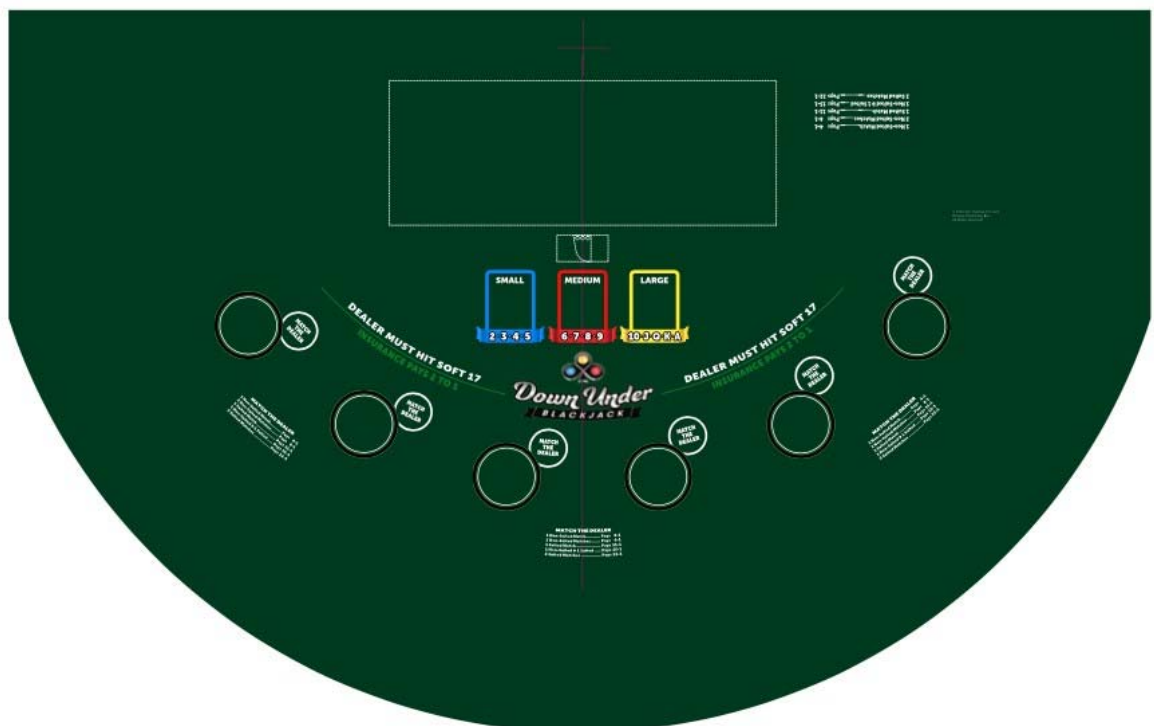
Fig 3. The cards are checked with the peeker or a Masque Card Reader. The shape and/or color on the card, or the lights on the Masque Card

Reader tell the dealer where to place the cards on the felt.



Fig. 4. The cards are moved to the correct range for the hole card. After the dealer has marked the card the action can begin.

4. The layout used for “Down Under Blackjack” is very similar to a standard blackjack layout. The layout identifies the game as Down Under Blackjack and includes the indicators in Fig. 2, 3 & 4.



5. Equipment*: Down Under Blackjack uses regular cards and a Masque Card Reader. The game can be played with 2, 4, 5, 6 or 8 decks. The game can be dealt from a standard multi-deck shoe or from a continuous shuffling machine. The game can also be played with a

standard peeker/no peek device. When using a standard peeker/no peek device, Down Under Cards are substituted for regular cards.

** Any unique gambling equipment must be approved equipment and supplied from a manufacturer that is licensed by the WSGC.*

6. Down Under Blackjack does not offer players the option to surrender.
7. Players can split cards of equal value including Aces up to three times, creating four hands. (Exception: when a casino stands on all dealer-hand totals of 17, then there is no re-splitting allowed.) When splitting Aces, each Ace will receive only one card.
8. Players can double down on any two cards. Players can double down after splitting (except when a casino stands on all dealer-hand totals of 17s). Players are allowed to double down for less than a full bet.
9. After all players have acted on their hands, the dealer will complete their draw.
10. The casino can choose to have the dealer either (a) hit "soft 17" and stand on all totals of hard 17 or higher, or (b) stand on all totals of 17.
11. When the dealer's hand is two gold-valued cards, the cards will be turned face up and exposed to the players before the beginning of action.
12. When the dealer's final hand totals 22, all players without exactly two original gold-valued cards (10, J, Q, K, or A) or a total of 21 will push.
13. Card room operators must not allow wagering limits to exceed the authorized limits set out in WAC 230-15-040 and WAC 230-15-140.
14. In addition to the base bet of Down Under Blackjack, casinos may offer the Match The Dealer bonus wager.

A Match The Dealer Up Card bonus wager is a wager that one or both of a player's original two cards of the hand will exactly match the dealer's up card in rank. A Match The Dealer Down Card bonus wager is a wager that either of

a player's original two cards of the hand will exactly match the dealer's down card in rank. There are two payoff amounts for each respective bonus wager, a suited rank match and an unsuited rank match. In order to play one or both Match The Dealer bonus wagers, the player must make a regular 21 wager. In order to make a Match The Dealer Down Card bonus wager for a particular hand, a player must also make a Match The Dealer Up Card bonus wager for that same hand. The house determines the Match The Dealer minimum and maximum bet sizes.

The dealer deals two cards face up to each player and two cards to himself, with one of the dealer's cards exposed as the up card and the non-exposed card as the dealer's down card. The dealer first checks the cards of all players with the Match the Dealer Up Card bonus wager to see if either of the player's original two cards match the dealer's up card in rank. Players are paid for each card where there is a match, if both of the player's original two cards match the dealer's up card both cards are paid. The dealer then deals the 21 game. If the house offers the Match The Dealer Down Card bonus wager, either immediately after the dealer exposes the dealer's down card or after the 21 game is played and as the dealer is settling the 21 game wagers, the dealer checks the original two cards of all players with the Match the Dealer Down Card bonus wager to see if either of the player's original two cards match the dealer's down card in rank. Players are paid for each card where there is a match, if both of the player's original two cards match the dealer's down card both cards are paid. Payouts for each card match will be made according to the following payout schedule.

Blackjack	Win Frequency	Unsuited Match Payout	Suited Match Payout
2 deck	13.2%, 1 in 7.6 hands	4:1	19:1
2 deck (alt)	13.2%, 1 in 7.6 hands	3:1	24:1
2 deck (alt)	13.2%, 1 in 7.6 hands	3:1	23:1
4 deck	14.0%, 1 in 7.1 hands	4:1	12:1
5 deck	14.2%, 1 in 7.1 hands	3:1	15:1
6 deck	14.3%, 1 in 7.0 hands	4:1	11:1
8 deck	14.4%, 1 in 6.9 hands	3:1	14:1

Example Hands

Player hand 19 vs. Dealer total of 18.

-Player will win.

Player total of 17 vs. a Dealer total of 17.

-Player will push (tie) and the bet receives no action.

Player total of 18 vs. a Dealer total of 20.

-Player will lose their bet.

Player hand of Blackjack vs. a Dealer hand of 22.

-Player will win at the rate of 3:2.

Player hand of Blackjack vs. a Dealer hand of Blackjack.

-Player will push (tie) and the bet receives no action.

Player hand of 9 vs. a Dealer hand of Blackjack.

-Player will lose and no cards are drawn.

Player hand of 19 vs. a Dealer hand of 22.

-Player will push (tie) and the bet receives no action.

Player hand of 20 (two Gold cards) vs. a Dealer hand of 22.

-Player will win.

Player hand of 20 (Ace/9) vs. a Dealer hand of 22.

-Player will push (tie) and the bet receives no action.

Player hand of 21 vs. a Dealer hand of 22.

-Player will win.

Player hand of Blackjack vs. a Dealer hand of 22.

-Player will win at the rate of 3:2.

Player splits a total of 20 (King/Queen) resulting in 21(King/Ace) and 20 (Queen/Jack) vs. a Dealer hand of 22.

-Player will win with 21. Player will push with 20 and the bet will receive no action.

Match The Dealer Progressive - Rules and Dealing Procedures

In addition to the regular 21 base game wager and the Match The Dealer bonus wagers, casinos may offer a Match The Dealer Progressive wager.

The player must make a base game wager, may optionally make any of the offered Match The Dealer bonus wagers and when Match The Dealer Progressive is offered, the player may optionally place a single, fixed amount wager on an electronically sensed wager spot. Once all wagers are placed, per casino procedures two cards will be dealt to the player, two cards to the dealer (one face-up and one face-down).

After all of the initial cards are dealt and prior to the base game being played, the dealer will check to see if either of the player's original two cards match the dealer's Up Card. There are two payoff amounts for each respective wager, a Suited rank match and a Non-Suited rank match. Players are paid for each card where there is a wager and a match.

Match The Dealer bonus wager payouts will be made according to the pay table above on page 6 of these rules, Match The Dealer Progressive payouts will be made according to Tables 3a-d, Tables 4a-e or Tables 5a-d. Once all Match The Dealer bonus wagers and Match The Dealer Progressive wager non-percentage payouts are made the base 21 game is played. Match The Dealer Progressive wager percentage payouts of 10% and 100% will be made per casino procedures, likely off table and after the base 21 game is played.

If the house offers the Match The Dealer Down Card bonus wager, either immediately after dealer's down card is exposed or after the base 21 game is played and as the dealer is settling the 21 game wagers, the dealer compares the original two cards of all players with the Match the Dealer Down Card bonus wager to see if either of the player's original two cards match the dealer's Down Card in rank. Again, there are two payoff amounts for each respective Down Card wager, a Suited rank match as well as a Non-Suited rank match, and players are paid for each card where there is a wager and a match.

When a player that makes a Match The Dealer Progressive wager gets 2 Suited Matches or a winning jackpot hand (as described in Tables 3a-d, Tables 4a-e and Tables 5a-d), that player will win a fixed payout or a Progressive Award of either 10% or 100% of the progressive jackpot for the winning hand, as described in Tables 3a-d, Tables 4a-e and Tables 5a-d.

If there are multiple 2 Suited Match wins in the same round of play, then multiple Progressive Awards from the progressive jackpot will be paid. When multiple

Progressive Awards occur in the same round of play, they are paid in sequence of occurrence. In other words, if the 2nd player from the dealer's left hits a 10% or 100% award and the 4th player from the dealer's left also hits a 10% or 100% award, the award for the 2nd player from the dealer's left will be subtracted from the progressive meter before the amount of the 10% or 100% award for the 4th player from the dealer's left is determined.

The house determines the Match The Dealer bonus wager minimum and maximum sizes as well as if any of the optional Match The Dealer bonus wagers are mandated. The house also determines the size of the fixed Match The Dealer Progressive bonus wager.

Tables 3-5: Match The Dealer Progressive Blackjack Payouts

See Attachment A: *Tables 3a-d*
or
See Attachment B: *Tables 4a-e*
or
See Attachment C: *Tables 5a-d*

Attachment A: TABLES 3a-d

These Match The Dealer Progressive pay tables must be played with the Match The Dealer Progressive v003 or higher as approved by the WSGC

Players are betting that either of their first 2 cards will match the dealer's up card

*Alternate Progressive Jackpot pays may be substituted, as described below

Table 3a

4 DECKS				
Matches	Paytable 1	Paytable 2	Paytable 3	Paytable 4
2 Suited Aces of ♠*	100% of Progressive	100% of Progressive	100% of Progressive	100% of Progressive
2 Suited Matches (all others)*	10% of Progressive	10% of Progressive	10% of Progressive	10% of Progressive
1 Non-Suited & 1 Suited Match	13 for 1	10 for 1	8 for 1	13 for 1
1 Suited match	11 for 1	7 for 1	4 for 1	10 for 1
2 Non-Suited Matches	4 for 1	6 for 1	8 for 1	6 for 1
1 Non-Suited Match	2 for 1	3 for 1	4 for 1	3 for 1
House Advantage	24.24%	24.12%	21.14%	15.51%
Matches	Paytable 5	Paytable 6	Paytable 7	Paytable 8
2 Suited Aces of ♠*	100% of Progressive	100% of Progressive	100% of Progressive	100% of Progressive
2 Suited Matches (all others)*	10% of Progressive	10% of Progressive	10% of Progressive	10% of Progressive
1 Non-Suited & 1 Suited Match	11 for 1	12 for 1	16 for 1	13 for 1
1 Suited match	7 for 1	8 for 1	13 for 1	9 for 1
2 Non-Suited Matches	8 for 1	8 for 1	6 for 1	8 for 1
1 Non-Suited Match	4 for 1	4 for 1	3 for 1	4 for 1
House Advantage	12.53%	9.66%	6.90%	6.79%

Table 3b

5 DECKS				
Matches	Paytable 1	Paytable 2	Paytable 3	Paytable 4
2 Suited Aces of ♠*	100% of Progressive	100% of Progressive	100% of Progressive	100% of Progressive
2 Suited Matches (all others)*	10% of Progressive	10% of Progressive	10% of Progressive	10% of Progressive
1 Non-Suited & 1 Suited Match	10 for 1	13 for 1	11 for 1	10 for 1
1 Suited match	7 for 1	11 for 1	8 for 1	6 for 1
2 Non-Suited Matches	6 for 1	4 for 1	6 for 1	8 for 1
1 Non-Suited Match	3 for 1	2 for 1	3 for 1	4 for 1
House Advantage	22.88%	22.25%	19.83%	14.35%
Matches	Paytable 5	Paytable 6	Paytable 7	Paytable 8
2 Suited Aces of ♠*	100% of Progressive	100% of Progressive	100% of Progressive	100% of Progressive
2 Suited Matches (all others)*	10% of Progressive	10% of Progressive	10% of Progressive	10% of Progressive
1 Non-Suited & 1 Suited Match	11 for 1	12 for 1	13 for 1	16 for 1
1 Suited match	7 for 1	8 for 1	9 for 1	13 for 1
2 Non-Suited Matches	8 for 1	8 for 1	8 for 1	6 for 1
1 Non-Suited Match	4 for 1	4 for 1	4 for 1	3 for 1
House Advantage	11.30%	8.24%	5.19%	4.56%

Table 3c

6 DECKS				
Matches	Paytable 1	Paytable 2	Paytable 3	Paytable 4
2 Suited Aces of ♠*	100% of Progressive	100% of Progressive	100% of Progressive	100% of Progressive
2 Suited Matches (all others)*	10% of Progressive	10% of Progressive	10% of Progressive	10% of Progressive
1 Non-Suited & 1 Suited Match	12 for 1	10 for 1	8 for 1	12 for 1
1 Suited match	10 for 1	7 for 1	4 for 1	9 for 1
2 Non-Suited Matches	4 for 1	6 for 1	8 for 1	6 for 1
1 Non-Suited Match	2 for 1	3 for 1	4 for 1	3 for 1
House Advantage	24.11%	22.06%	20.00%	15.71%
Matches	Paytable 5	Paytable 6	Paytable 7	Paytable 8
2 Suited Aces of ♠*	100% of Progressive	100% of Progressive	100% of Progressive	100% of Progressive
2 Suited Matches (all others)*	10% of Progressive	10% of Progressive	10% of Progressive	10% of Progressive
1 Non-Suited & 1 Suited Match	13 for 1	11 for 1	15 for 1	13 for 1
1 Suited match	10 for 1	7 for 1	12 for 1	9 for 1
2 Non-Suited Matches	6 for 1	8 for 1	6 for 1	8 for 1
1 Non-Suited Match	3 for 1	4 for 1	3 for 1	4 for 1
House Advantage	12.53%	10.48%	6.19%	4.13%

Table 3d

8 DECKS				
Matches	Paytable 1	Paytable 2	Paytable 3	Paytable 4
2 Suited Aces of ♠*	100% of Progressive	100% of Progressive	100% of Progressive	100% of Progressive

2 Suited Matches (all others)*	10% of Progressive	10% of Progressive	10% of Progressive	10% of Progressive
1 Non-Suited & 1 Suited Match	9 for 1	12 for 1	8 for 1	12 for 1
1 Suited match	6 for 1	10 for 1	4 for 1	9 for 1
2 Non-Suited Matches	6 for 1	4 for 1	8 for 1	6 for 1
1 Non-Suited Match	3 for 1	2 for 1	4 for 1	3 for 1
House Advantage	24.35%	22.62%	19.44%	14.38%
Matches	Paytable 5	Paytable 6	Paytable 7	Paytable 8
2 Suited Aces of ♠*	100% of Progressive	100% of Progressive	100% of Progressive	100% of Progressive
2 Suited Matches (all others)*	10% of Progressive	10% of Progressive	10% of Progressive	10% of Progressive
1 Non-Suited & 1 Suited Match	10 for 1	13 for 1	14 for 1	15 for 1
1 Suited match	6 for 1	10 for 1	11 for 1	12 for 1
2 Non-Suited Matches	8 for 1	6 for 1	6 for 1	6 for 1
1 Non-Suited Match	4 for 1	3 for 1	3 for 1	3 for 1
House Advantage	12.79%	11.06%	7.73%	4.41%

**You can substitute the three Alternate Progressive Jackpot Pays below for both the 2 Suited Aces of ♠ and 2 Suited Matches (all others) in any of the above Tables in Attachment A. For example, in Table 3a, 2 Suited Aces of ♠ and 2 Suited Matches (all others) will be replaced with the three hands and alternate pays below.*

	Alternate Pays
3 Suited Aces of ♠ WITH King ♠ Dealer's Down Card	100% of Progressive
3 Suited Aces	10% of Progressive
3-Card Suited Match: 2s - Ks**	\$

***may be paid either out of the progressive jackpot or by the house*

"\$" means that the prize is set by the casino operator and can be a fixed or odds based payout. These prizes are required to be displayed at each gaming table.

ATTACHMENT B: TABLES 4a-e

These Match The Dealer Progressive pay tables must be played with the Match The Dealer Progressive v003 or higher as approved by the WSGC

Players are betting that either of their first 2 cards will match either of the dealer's first 2 cards (up and down cards)

"2 Suited Matches" means both player cards match each other and match the dealer card(s) in rank & suit

*Alternate Progressive Jackpot pays may be substituted, as described below

Table 4a

2 DECKS				
Matches	Paytable 1	Paytable 2	Paytable 3	Paytable 4
Player A♠K♠ matches Dealer A♠K♠	100% of Progressive	100% of Progressive	100% of Progressive	100% of Progressive
Any 4 Aces	10% of Progressive	10% of Progressive	10% of Progressive	10% of Progressive
Any 4 Same Rank: 2s - Ks**	\$	\$	\$	\$
1 Non-Suited & 1 Suited Match	15 for 2	8 for 1	7 for 1	10 for 1
1 Suited match	6 for 1	13 for 2	5 for 1	17 for 2
2 Non-Suited Matches	3 for 1	3 for 1	4 for 1	3 for 1
1 Non-Suited Match	3 for 2	3 for 2	2 for 1	3 for 2
House Advantage	20.92%	18.98%	13.17%	11.24%
Matches	Paytable 5	Paytable 6	Paytable 7	Paytable 8
Player A♠K♠ matches Dealer A♠K♠	100% of Progressive	100% of Progressive	100% of Progressive	100% of Progressive
Any 4 Aces	10% of Progressive	10% of Progressive	10% of Progressive	10% of Progressive
Any 4 Same Rank: 2s - Ks**	\$	\$	\$	\$
1 Non-Suited & 1 Suited Match	8 for 1	17 for 2	23 for 2	13 for 2
1 Suited match	6 for 1	13 for 2	10 for 1	4 for 1
2 Non-Suited Matches	4 for 1	4 for 1	3 for 1	5 for 1
1 Non-Suited Match	2 for 1	2 for 1	3 for 2	5 for 2
House Advantage	9.30%	7.36%	5.43%	5.43%

Table 4b

4 DECKS				
Matches	Paytable 1	Paytable 2	Paytable 3	Paytable 4
2 Suited Matches w/ Dealer's Up AND Down*	100% of Progressive	100% of Progressive	100% of Progressive	100% of Progressive
2 Suited Matches w/ Dealer's Up OR Down*	10% of Progressive	10% of Progressive	10% of Progressive	10% of Progressive
1 Non-Suited & 1 Suited Match	13 for 2	5 for 1	4 for 1	13 for 2
1 Suited match	11 for 2	7 for 2	2 for 1	5 for 1
2 Non-Suited Matches	2 for 1	3 for 1	4 for 1	3 for 1
1 Non-Suited Match	1 for 1	3 for 2	2 for 1	3 for 2
House Advantage	24.24%	24.12%	21.14%	15.51%
Matches	Paytable 5	Paytable 6	Paytable 7	Paytable 8
2 Suited Matches w/ Dealer's Up AND Down*	100% of Progressive	100% of Progressive	100% of Progressive	100% of Progressive
2 Suited Matches w/ Dealer's Up OR Down*	10% of Progressive	10% of Progressive	10% of Progressive	10% of Progressive
1 Non-Suited & 1 Suited Match	11 for 2	6 for 1	8 for 1	13 for 2
1 Suited match	7 for 2	4 for 1	13 for 2	9 for 2
2 Non-Suited Matches	4 for 1	4 for 1	3 for 1	4 for 1
1 Non-Suited Match	2 for 1	2 for 1	3 for 2	2 for 1
House Advantage	12.53%	9.66%	6.90%	6.79%

Table 4c

5 DECKS				
Matches	Paytable 1	Paytable 2	Paytable 3	Paytable 4
2 Suited Matches w/ Dealer's Up AND Down*	100% of Progressive	100% of Progressive	100% of Progressive	100% of Progressive
2 Suited Matches w/ Dealer's Up OR Down*	10% of Progressive	10% of Progressive	10% of Progressive	10% of Progressive
1 Non-Suited & 1 Suited Match	5 for 1	13 for 2	11 for 2	5 for 1
1 Suited match	7 for 2	11 for 2	4 for 1	3 for 1
2 Non-Suited Matches	3 for 1	2 for 1	3 for 1	4 for 1
1 Non-Suited Match	3 for 2	1 for 1	3 for 2	2 for 1
House Advantage	22.88%	22.25%	19.83%	14.35%
Matches	Paytable 5	Paytable 6	Paytable 7	Paytable 8
2 Suited Matches w/ Dealer's Up AND Down*	100% of Progressive	100% of Progressive	100% of Progressive	100% of Progressive
2 Suited Matches w/ Dealer's Up OR Down*	10% of Progressive	10% of Progressive	10% of Progressive	10% of Progressive
1 Non-Suited & 1 Suited Match	11 for 2	6 for 1	13 for 2	8 for 1
1 Suited match	7 for 2	4 for 1	9 for 2	13 for 2

2 Non-Suited Matches	4 for 1	4 for 1	4 for 1	3 for 1
1 Non-Suited Match	2 for 1	2 for 1	2 for 1	3 for 2
House Advantage	11.30%	8.24%	5.19%	4.56%

Table 4d

6 DECKS				
Matches	Paytable 1	Paytable 2	Paytable 3	Paytable 4
2 Suited Matches w/ Dealer's Up AND Down*	100% of Progressive	100% of Progressive	100% of Progressive	100% of Progressive
2 Suited Matches w/ Dealer's Up OR Down*	10% of Progressive	10% of Progressive	10% of Progressive	10% of Progressive
1 Non-Suited & 1 Suited Match	6 for 1	5 for 1	4 for 1	6 for 1
1 Suited match	5 for 1	7 for 2	2 for 1	9 for 2
2 Non-Suited Matches	2 for 1	3 for 1	4 for 1	3 for 1
1 Non-Suited Match	1 for 1	3 for 2	2 for 1	3 for 2
House Advantage	24.11%	22.06%	20.00%	15.71%
Matches	Paytable 5	Paytable 6	Paytable 7	Paytable 8
2 Suited Matches w/ Dealer's Up AND Down*	100% of Progressive	100% of Progressive	100% of Progressive	100% of Progressive
2 Suited Matches w/ Dealer's Up OR Down*	10% of Progressive	10% of Progressive	10% of Progressive	10% of Progressive
1 Non-Suited & 1 Suited Match	13 for 2	11 for 2	15 for 2	13 for 2
1 Suited match	5 for 1	7 for 2	6 for 1	9 for 2
2 Non-Suited Matches	3 for 1	4 for 1	3 for 1	4 for 1
1 Non-Suited Match	3 for 2	2 for 1	3 for 2	2 for 1
House Advantage	12.53%	10.48%	6.19%	4.13%

Table 4e

8 DECKS				
Matches	Paytable 1	Paytable 2	Paytable 3	Paytable 4
2 Suited Matches w/ Dealer's Up AND Down*	100% of Progressive	100% of Progressive	100% of Progressive	100% of Progressive
2 Suited Matches w/ Dealer's Up OR Down*	10% of Progressive	10% of Progressive	10% of Progressive	10% of Progressive
1 Non-Suited & 1 Suited Match	9 for 2	6 for 1	4 for 1	6 for 1
1 Suited match	3 for 1	5 for 1	2 for 1	9 for 2
2 Non-Suited Matches	3 for 1	2 for 1	4 for 1	3 for 1
1 Non-Suited Match	3 for 2	1 for 1	2 for 1	3 for 2
House Advantage	24.35%	22.62%	19.44%	14.38%
Matches	Paytable 5	Paytable 6	Paytable 7	Paytable 8
2 Suited Matches w/ Dealer's Up AND Down*	100% of Progressive	100% of Progressive	100% of Progressive	100% of Progressive
2 Suited Matches w/ Dealer's Up OR Down*	10% of Progressive	10% of Progressive	10% of Progressive	10% of Progressive
1 Non-Suited & 1 Suited Match	5 for 1	13 for 2	7 for 1	15 for 2
1 Suited match	3 for 1	5 for 1	11 for 2	6 for 1
2 Non-Suited Matches	4 for 1	3 for 1	3 for 1	3 for 1
1 Non-Suited Match	2 for 1	3 for 2	3 for 2	3 for 2
House Advantage	12.79%	11.06%	7.73%	4.41%

*You can substitute the three Alternate Progressive Jackpot Pays below for both the 2 Suited Matches w/ Dealer's Up AND Down and 2 Suited Matches w/ Dealer's Up OR Down in any of the above Tables in Attachment B. For example, in Table 4e, 2 Suited Matches w/ Dealer's Up AND Down and 2 Suited Matches w/ Dealer's Up OR Down will be replaced with the three hands and alternate pays below.

	Alternate Pays
4 Suited Aces	100% of Progressive
4-Card Suited Match: 2s - Ks	10% of Progressive
3-Card Suited Match w/ Dealer's Up OR Down**	\$

**may be paid either out of the progressive jackpot or by the house

"\$" means that the prize is set by the casino operator and can be a fixed or odds based payout. These prizes are required to be displayed at each gaming table.

ATTACHMENT C: TABLE 5a-d

These Match The Dealer Progressive pay tables must be played with the Match The Dealer Progressive v003 or higher as approved by the WSGC

Fixed pays involve either of the player's first 2 cards matching the dealer's up card

10% and 100% Progressive Jackpot pays involve player's first 2 cards matching each other and BOTH the dealer's up AND down cards in rank & suit

Table 5a

4 DECKS				
Matches	Paytable 1	Paytable 2	Paytable 3	Paytable 4
4 Suited Aces Dealer's Up and Down Cards	100% of Progressive	100% of Progressive	100% of Progressive	100% of Progressive
4 Suited 2s - Ks Dealer's Up and Down Cards	10% of Progressive	10% of Progressive	10% of Progressive	10% of Progressive
2 Suited Matches*	\$	\$	\$	\$
1 Non-Suited & 1 Suited Match	13 for 1	10 for 1	8 for 1	13 for 1
1 Suited match	11 for 1	7 for 1	4 for 1	10 for 1
2 Non-Suited Matches	4 for 1	6 for 1	8 for 1	6 for 1
1 Non-Suited Match	2 for 1	3 for 1	4 for 1	3 for 1
House Advantage	24.24%	24.12%	21.14%	15.51%
Matches	Paytable 5	Paytable 6	Paytable 7	Paytable 8
4 Suited Aces Dealer's Up and Down Cards	100% of Progressive	100% of Progressive	100% of Progressive	100% of Progressive
4 Suited 2s - Ks Dealer's Up and Down Cards	10% of Progressive	10% of Progressive	10% of Progressive	10% of Progressive
2 Suited Matches*	\$	\$	\$	\$
1 Non-Suited & 1 Suited Match	11 for 1	12 for 1	16 for 1	13 for 1
1 Suited match	7 for 1	8 for 1	13 for 1	9 for 1
2 Non-Suited Matches	8 for 1	8 for 1	6 for 1	8 for 1
1 Non-Suited Match	4 for 1	4 for 1	3 for 1	4 for 1
House Advantage	12.53%	9.66%	6.90%	6.79%

Table 5b

5 DECKS				
Matches	Paytable 1	Paytable 2	Paytable 3	Paytable 4
4 Suited Aces Dealer's Up and Down Cards	100% of Progressive	100% of Progressive	100% of Progressive	100% of Progressive
4 Suited 2s - Ks Dealer's Up and Down Cards	10% of Progressive	10% of Progressive	10% of Progressive	10% of Progressive
2 Suited Matches*	\$	\$	\$	\$
1 Non-Suited & 1 Suited Match	10 for 1	13 for 1	11 for 1	10 for 1
1 Suited match	7 for 1	11 for 1	8 for 1	6 for 1
2 Non-Suited Matches	6 for 1	4 for 1	6 for 1	8 for 1
1 Non-Suited Match	3 for 1	2 for 1	3 for 1	4 for 1
House Advantage	22.88%	22.25%	19.83%	14.35%
Matches	Paytable 5	Paytable 6	Paytable 7	Paytable 8
4 Suited Aces Dealer's Up and Down Cards	100% of Progressive	100% of Progressive	100% of Progressive	100% of Progressive
4 Suited 2s - Ks Dealer's Up and Down Cards	10% of Progressive	10% of Progressive	10% of Progressive	10% of Progressive
2 Suited Matches*	\$	\$	\$	\$
1 Non-Suited & 1 Suited Match	11 for 1	12 for 1	13 for 1	16 for 1
1 Suited match	7 for 1	8 for 1	9 for 1	13 for 1
2 Non-Suited Matches	8 for 1	8 for 1	8 for 1	6 for 1
1 Non-Suited Match	4 for 1	4 for 1	4 for 1	3 for 1
House Advantage	11.30%	8.24%	5.19%	4.56%

Table 5c

6 DECKS				
Matches	Paytable 1	Paytable 2	Paytable 3	Paytable 4
4 Suited Aces Dealer's Up and Down Cards	100% of Progressive	100% of Progressive	100% of Progressive	100% of Progressive
4 Suited 2s - Ks Dealer's Up and Down Cards	10% of Progressive	10% of Progressive	10% of Progressive	10% of Progressive
2 Suited Matches*	\$	\$	\$	\$
1 Non-Suited & 1 Suited Match	12 for 1	10 for 1	8 for 1	12 for 1
1 Suited match	10 for 1	7 for 1	4 for 1	9 for 1
2 Non-Suited Matches	4 for 1	6 for 1	8 for 1	6 for 1
1 Non-Suited Match	2 for 1	3 for 1	4 for 1	3 for 1
House Advantage	24.11%	22.06%	20.00%	15.71%
Matches	Paytable 5	Paytable 6	Paytable 7	Paytable 8
4 Suited Aces Dealer's Up and Down Cards	100% of Progressive	100% of Progressive	100% of Progressive	100% of Progressive
4 Suited 2s - Ks Dealer's Up and Down Cards	10% of Progressive	10% of Progressive	10% of Progressive	10% of Progressive
2 Suited Matches*	\$	\$	\$	\$
1 Non-Suited & 1 Suited Match	13 for 1	11 for 1	15 for 1	13 for 1
1 Suited match	10 for 1	7 for 1	12 for 1	9 for 1
2 Non-Suited Matches	6 for 1	8 for 1	6 for 1	8 for 1
1 Non-Suited Match	3 for 1	4 for 1	3 for 1	4 for 1

<i>House Advantage</i>	12.53%	10.48%	6.19%	4.13%
------------------------	--------	--------	-------	-------

Table 5d

8 DECKS				
Matches	Paytable 1	Paytable 2	Paytable 3	Paytable 4
4 Suited Aces Dealer's Up and Down Cards	100% of Progressive	100% of Progressive	100% of Progressive	100% of Progressive
4 Suited 2s - Ks Dealer's Up and Down Cards	10% of Progressive	10% of Progressive	10% of Progressive	10% of Progressive
2 Suited Matches*	\$	\$	\$	\$
1 Non-Suited & 1 Suited Match	9 for 1	12 for 1	8 for 1	12 for 1
1 Suited match	6 for 1	10 for 1	4 for 1	9 for 1
2 Non-Suited Matches	6 for 1	4 for 1	8 for 1	6 for 1
1 Non-Suited Match	3 for 1	2 for 1	4 for 1	3 for 1
<i>House Advantage</i>	24.35%	22.62%	19.44%	14.38%
Matches	Paytable 5	Paytable 6	Paytable 7	Paytable 8
4 Suited Aces Dealer's Up and Down Cards	100% of Progressive	100% of Progressive	100% of Progressive	100% of Progressive
4 Suited 2s - Ks Dealer's Up and Down Cards	10% of Progressive	10% of Progressive	10% of Progressive	10% of Progressive
2 Suited Matches*	\$	\$	\$	\$
1 Non-Suited & 1 Suited Match	10 for 1	13 for 1	14 for 1	15 for 1
1 Suited match	6 for 1	10 for 1	11 for 1	12 for 1
2 Non-Suited Matches	8 for 1	6 for 1	6 for 1	6 for 1
1 Non-Suited Match	4 for 1	3 for 1	3 for 1	3 for 1
<i>House Advantage</i>	12.79%	11.06%	7.73%	4.41%

*may be paid either out of the progressive jackpot or by the house

"\$" means that the prize is set by the casino operator and can be a fixed or odds based payout. These prizes are required to be displayed at each gaming table.



